



# Fort Bend County Levee Improvement District No. 2

## Third Pump Station Construction Update

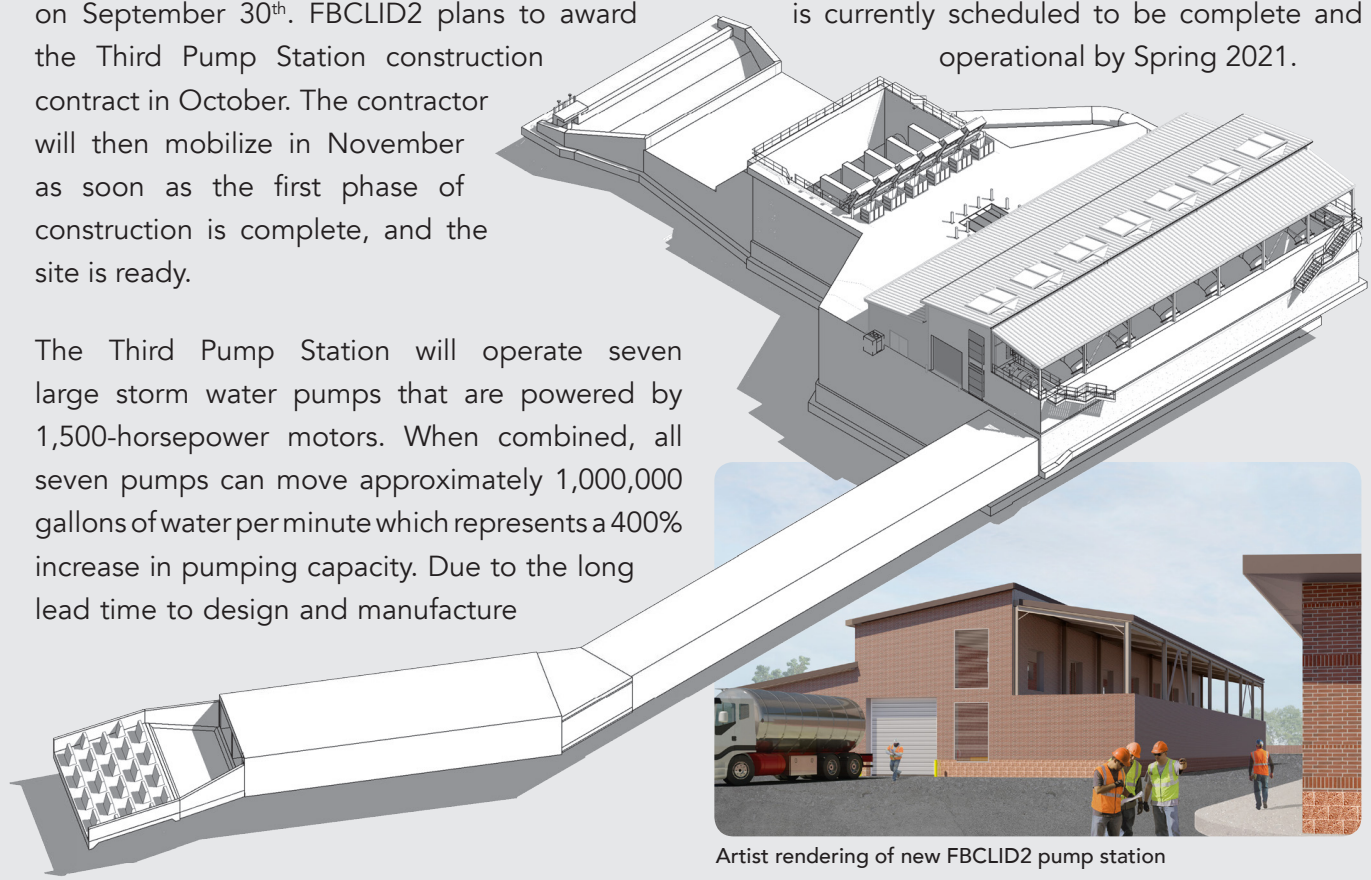
Fort Bend County Levee Improvement District No. 2 (FBCLID2) recently awarded the first construction contract for the Third Pump Station to Jerdon Enterprise. Construction activity is expected to begin in late-August. This first construction contract will prepare the project site by removing existing structures, installing construction access and security, and preparing for multiple utility relocations.

The second phase of construction addresses installation of the pump station. The final pump station design is now complete and bids for this second phase of construction will be opened on September 30<sup>th</sup>. FBCLID2 plans to award the Third Pump Station construction contract in October. The contractor will then mobilize in November as soon as the first phase of construction is complete, and the site is ready.

The Third Pump Station will operate seven large storm water pumps that are powered by 1,500-horsepower motors. When combined, all seven pumps can move approximately 1,000,000 gallons of water per minute which represents a 400% increase in pumping capacity. Due to the long lead time to design and manufacture

the pumps and motors, the manufacturing contract was awarded back in April 2019.

The Third Pump Station construction site is at the north end of Oakland Dr. and will be accessed via Sweetwater Blvd. and Elkins Rd. FBCLID2 recognizes this is a major construction project occurring inside a residential neighborhood. The pump station design addresses these constraints and concerns as much as possible. However, the nature of the project requires thousands of hours of major construction activity, including large construction vehicles carrying equipment and materials in and out of the neighborhood. The Third Pump Station is currently scheduled to be complete and operational by Spring 2021.



Artist rendering of new FBCLID2 pump station

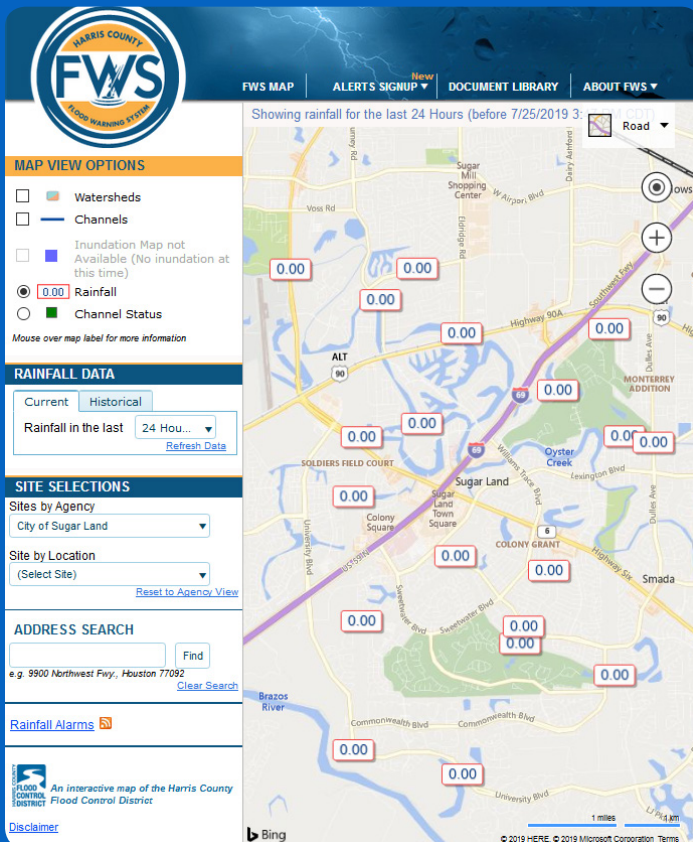
# FBCLID2 Partners With Enchanted Rock LLC on Emergency Pump Resiliency Microgrid at Third Pump Station

With service to the community as their priority, FBCLID2 entered into an agreement with Enchanted Rock Solutions, LLC. (Enchanted Rock) to ensure the continuous functioning of their storm water pumping station. Enchanted Rock’s clean and quiet backup power solution provides FBCLID2 with a redundant electrical service that will ensure operational integrity despite disruptions to the utility electricity supply.

“We are excited to extend our reliability services to FBCLID2 and the Fort Bend community,” said Thomas McAndrew, CEO of Enchanted Rock. “We are proud to provide a solution that will increase the pumping station’s reliability without disrupting the daily lives of residents.”

The District selected Enchanted Rock’s natural gas generators based on their history of providing resilient backup power during utility outages and severe weather events. Enchanted Rock, a Houston-based company, delivers long-duration backup power with the cleanest technology available. Enchanted Rock’s unique model allows FBCLID2 to receive full-facility backup with worry-free reliability at a fraction of the cost of a standard reliability system. FBCLID2 joins the list of municipalities served by Enchanted Rock’s resiliency microgrids, which include CNP MUD, Gulf Coast Water Authority (GCWA), and others.

## Remote Rainfall and Water Level Monitoring System



The District, in partnership with the City of Sugar Land and neighboring Harris County, recently completed a project to improve the monitoring of rainfall totals and the water depth of drainage channels around the District. As part of this project the District installed five new flood monitoring stations at key locations to allow for remote monitoring of water levels within the levee system. The District also replaced and upgraded two older flood monitoring stations that were at the end of their useful life. The City of Sugar Land and neighboring Levee Districts also increased the number of gauges located outside the District as part of this project. Information produced by the flood monitoring system is available through the District’s website [www.FBCLID2.com/gauges](http://www.FBCLID2.com/gauges). The District also plans on adding cameras to monitor critical drainage areas.

## Mike Thelen Pump Station Expansion

While the District works to increase pumping capacity of water out of Ditch A with the Third Pump Station project, it is also concurrently working on a project to increase the pumping capacity of the Mike Thelen Pump Station which pumps water out of Ditch F. The project consists of two phases, the first phase is currently in progress to replace the existing pumps which are nearing the end of their useful life. The installation of the replacement pumps is expected to be completed by Spring 2020 and will increase pumping capacity by an additional 10,000 GPM, a 13% increase over the current pumping capacity. The second phase of the project will focus on expanding the Mike Thelen pump station and increasing pumping capacity by an additional 175%, for a total capacity of over 250,000 GPM. Construction on the Mike Thelen expansion is currently scheduled to begin in Summer 2020.

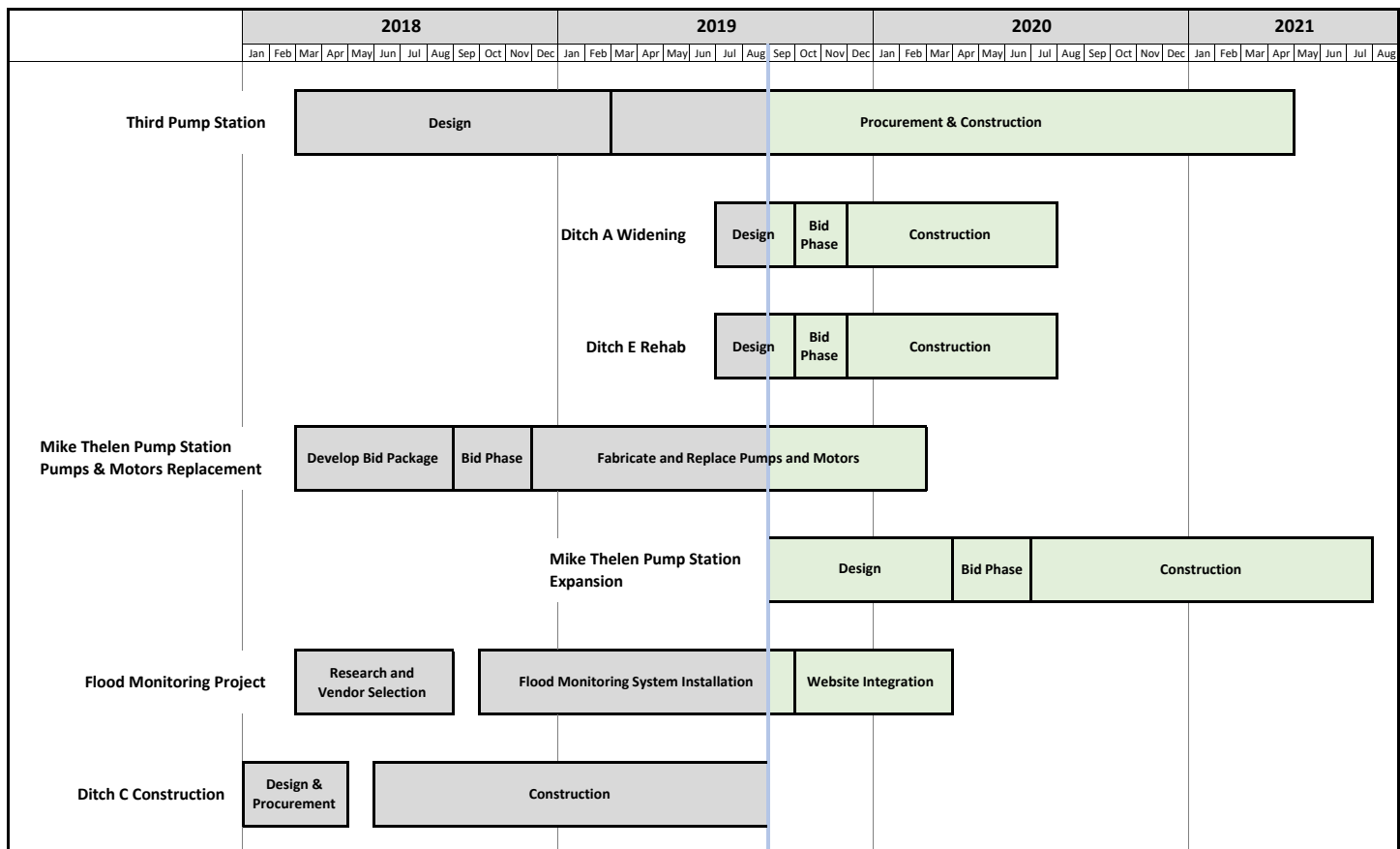
### sign up to receive important district news and updates

Text **LID2** to **474747** to register for text messages alerts, or visit [FBCLID2.com/alerts](http://FBCLID2.com/alerts) to receive this information via email.\*

### stay up to date on weather emergencies

For FBCLID2 weather updates and links, including FBCLID2 rainfall and stream gauges and the National Weather Service's Brazos River level gauge visit [FBCLID2.com/emergency](http://FBCLID2.com/emergency)

## FBCLID2 Capital Improvement Project Schedule



\* The district respects your privacy. Your contact information will not be used for any purpose other than to communicate with you regarding district news and events. Standard text messaging or data rates may apply.



Fort Bend County Levee Improvement District No. 2  
3200 Southwest Freeway, Suite 2600  
Houston, TX 77027  
FBCLID2.com

PRESORTED STANDARD  
U.S. POSTAGE PAID  
PAMELA PRINTING CO.  
77478

## Should I Buy Flood Insurance If My Property Is Protected By A Levee?

Yes! Many property owners may be unaware that private home insurance policies do not cover losses caused by rising flood waters. FBCLID2 was created to mitigate the threat of rising flood water from the Brazos River. However, very strong, localized rainfall can potentially overwhelm the design standards of the drainage system and trap water in streets and yards, eventually reaching into homes. While not a common occurrence, localized rainfall of over 12 inches in a day has occurred and will continue to occur across Southeast Texas. In recent memory, Hurricane Harvey dropped more than 30 inches of rain in Sugar Land.

FBCLID2 encourages residents to check with their insurance carrier and discuss policy options for your property. For additional information check out [www.FloodSmart.gov](http://www.FloodSmart.gov).

## District Projects to Improve Drainage Channels and Increase Rainfall Storage Capacity

The District is working on several projects designed to improve the streams and drainage ditches inside the levee system. The preliminary design for widening Ditch A is currently being developed and the final design is expected to be completed Fall 2019 with construction beginning in 2020. The District is also working to partner with the Fort Bend Independent School District and the Sweetwater Country Club to create additional offline and overbank storage to be used during the most extreme rainfall events. Projects to rectify and add hard surfacing to ditches B and E to prevent erosion and meandering are also underway.

To contact FBCLID2, email [board@fbclid2.com](mailto:board@fbclid2.com) or visit [FBCLID2.com/contact](http://FBCLID2.com/contact)